



Lunsford Lane

Larkfield, Aylesford ME20 6HY

- CHAIN FREE!
- Two Double bedrooms
- Easy M20/ M2 Access
- GUIDE PRICE £325,000 - £350,000
- Large Double Garage And Driveway
- Popular 'Lunsford Lane' Location
 - Downstairs Cloakroom
- Unexpectedly Back Available Again!

Guide Price £325,000 Freehold

Local Authority
Council Tax Band
EPC Rating

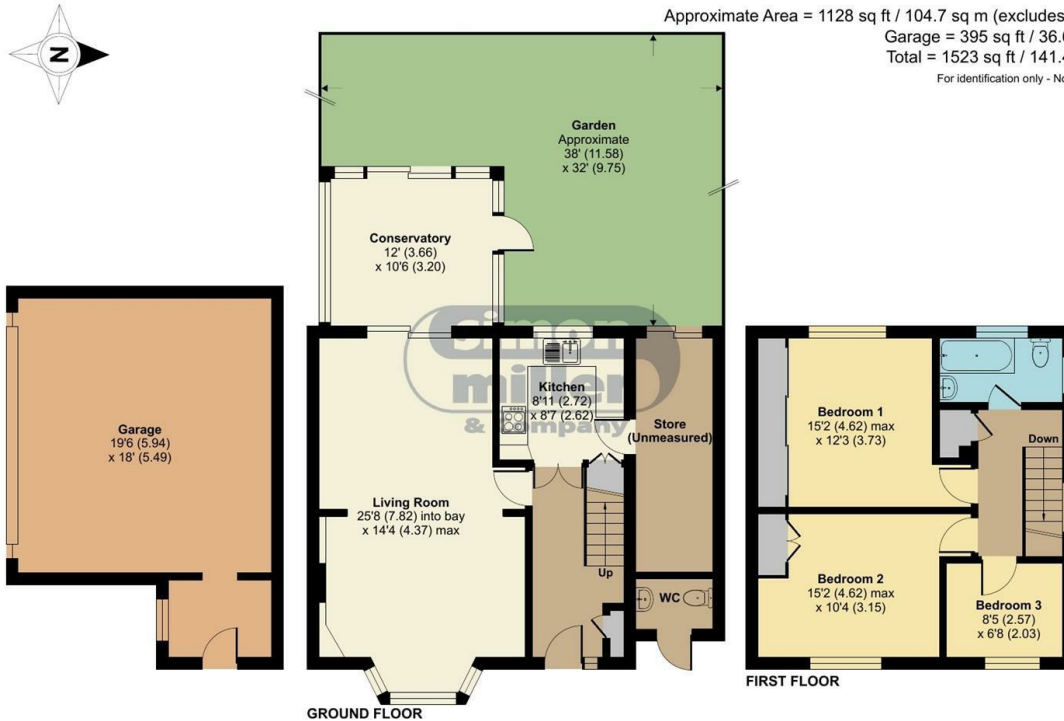
Lunsford Lane, Larkfield, Aylesford, ME20

Approximate Area = 1128 sq ft / 104.7 sq m (excludes store)

Garage = 395 sq ft / 36.6 sq m

Total = 1523 sq ft / 141.4 sq m

For identification only - Not to scale



Floor plan produced in accordance with RICS Property Measurement Standards incorporating International Property Measurement Standards (IPMS2 Residential). © nichecom 2022. Produced for Simon Miller & Company. REF: 932592

Malling Office

777 London Road, Larkfield, Aylesford,
Kent, ME20 6DE

Contact

01732 875706
larkfieldsales@simonmiller.co.uk
<https://simonmiller.co.uk/>

Agents Note: Whilst every care has been taken to prepare these particulars, they are for guidance purposes only. All measurements are approximate and for general guidance purposes only and whilst every care has been taken to ensure accuracy, they should not be relied upon and potential buyers/tenants are advised to recheck the measurements.

